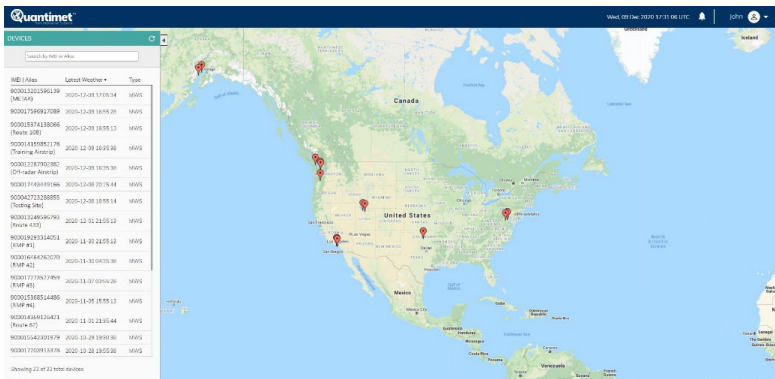


KEY FEATURES

Security & Privacy

Intellisense protects the privacy of your sensors by offering a secure login and account permissions at Quantimet.com. Clients can set up multiple accounts with different permissions depending on their needs. Users can also choose to disable GPS reporting to ensure that your sensors' locations remain hidden, and the software can send alerts when movement or tampering has been detected.

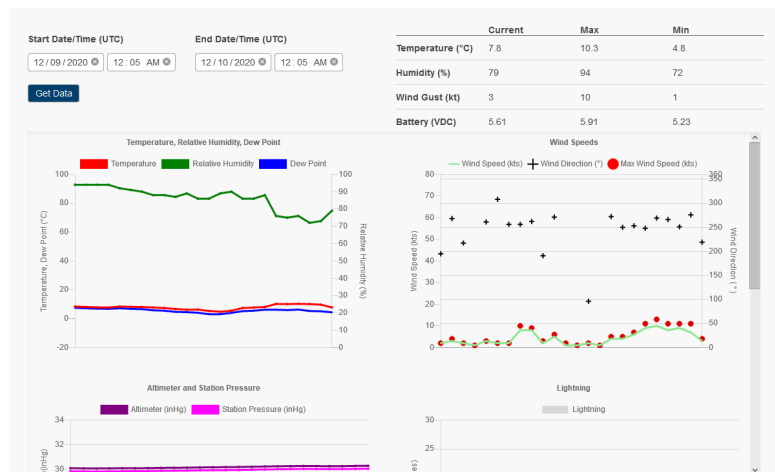
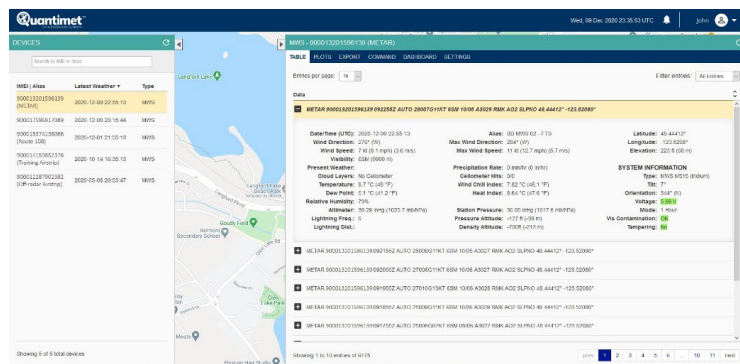


Access Data From Anywhere in the World

Upon opening Quantimet, you see a worldwide map with clear markers for every one of your active environmental-sensing devices. Simply click on an icon to get a full list of weather observations from that station.

A Complete View of Your Data

The Data Window is where you can see a specific sensor's data as a METAR report. With this window, you can also remotely command your sensor, plot and visualize trends, view requested images, and export data into an Excel-friendly format.

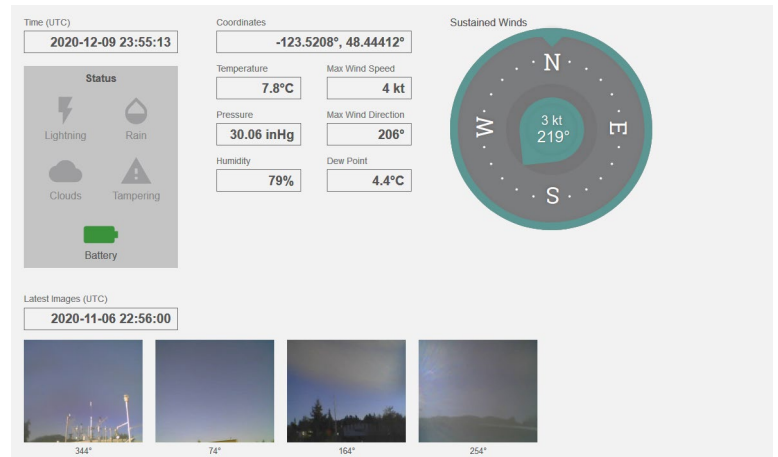


Visualize Plots & Trends

With Quantimet, users can visualize data from one or multiple sensors to plot trends or identify environmental changes over time. Opening the Plots window will automatically display temperature, humidity, dew point, wind speeds, and lightning frequency. Users can easily set new time periods to plot or visualize changes instantly.

View Site Imagery from the Dashboard

The Dashboard gives users a quick and intuitive overview of the latest report from your weather station or sensor. The station's status, GPS coordinates, and environmental data appear immediately in an easily readable format. If your station or sensor is equipped with a camera, you can see site imagery from the station's last report.



The Command History interface allows users to manage and track commands sent to the sensor. It includes a 'Send' button for issuing new commands and a table of the command history, which updates every 5 minutes. The table lists the timestamp, the issuer (jdoe@intellisenseinc.com), and the command (e.g., 1-Hr Mode, Auto-schedule Image Request).

Timestamp	Issuer	Commands
2020-12-09 00:47	jdoe@intellisenseinc.com	1-Hr Mode
2020-12-09 00:44	jdoe@intellisenseinc.com	1-Hr Mode
2020-11-23 16:39	jdoe@intellisenseinc.com	1-Hr Mode
2020-11-18 00:04	jdoe@intellisenseinc.com	Auto-schedule Image Request at 2100 UTC
2020-11-18 00:04	jdoe@intellisenseinc.com	Auto-schedule Image Request at 1800 UTC

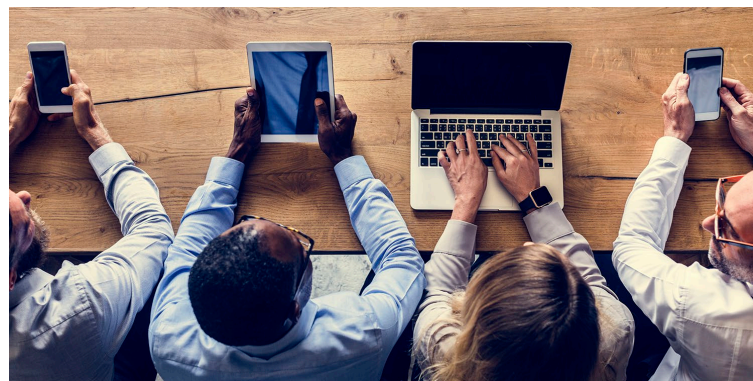
Command Your Sensors Remotely

Quantimet enables users to remotely send commands to change device settings and to enable/disable certain features, thus reducing the number of costly trips to the sensor site. You can also see a complete command history for every sensor, which is updated every 5 minutes.

Set Up Notifications and Email Alerts

From the Settings menu, you can receive notifications based on minimum/maximum thresholds that were set for each environmental parameter. You can select between metric or Imperial measurements. Email alerts are also available with Professional-level plans.

Notifications					Save All
Parameter	Notifications	>	<	Units	
Temperature	OFF	>	<	F	
Wind speed	OFF	>	<	mph	
Wind direction change	OFF	>	<	degrees	
Visibility	OFF	>	<	SM	
Precipitation	OFF	>	<	in/hr	
Station Pressure	OFF	>	<	inHg	
Relative Humidity	OFF	>	<	%	
Lightning Distance	OFF	>	<	NM	
Lightning Frequency	OFF	>	<		



Data Logging, Storage, and Exporting

Cloud-based data logging from Quantimet delivers cost savings, a nearly infinite storage capacity, instant availability, and backup protection to ensure that your data is safe and readily accessible.



PLAN DETAILS		Basic	Advanced	Professional
	Yearly Subscription (Onboarding fee not included)	Included with purchase of any device from Intellisense Systems	Purchased separately	Purchased separately
	View Latest Observation (Dashboard)	•	•	•
	View Last 6 Months	•	•	•
	Max No. of Accounts	1	5	25
	Max No. of Sensors	5	Unlimited	Unlimited
	Standard Plots	24-hours only	Up to 6 months	Up to 12 months
	In-Software Notifications	—	•	•
	Export Data History (6 months)	—	•	—
	Export Data History (12 months)	—	—	•
	Email Alerts / SMS	—	—	•
	Command / Setup	•	•	•
	API	1-way activation fee per destination	1-way activation fee per destination	1-way unlimited
	Archive Retrieval Requests	Pay per request	Pay per request	Pay per request

Phone: 310-320-1827
 Email: Info@intellisenseinc.com
www.intellisenseinc.com